

 **DRESSTA**

# TD-20M

**CRAWLER DOZER STD / LGP**

**CN Tier 3**

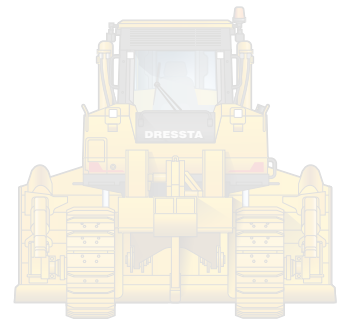
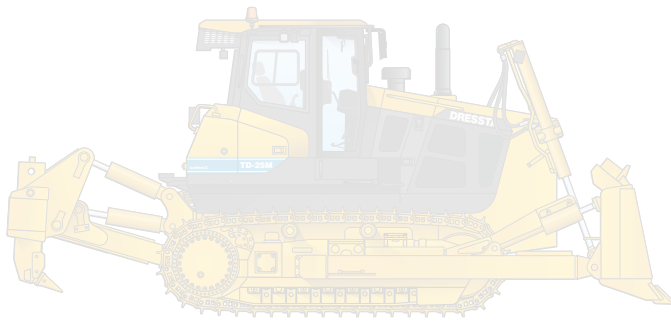
<b>ENGINE:</b>	Cummins L9
<b>POWER:</b>	203 kW (272 HP)
<b>OPERATING WEIGHT:</b>	24 600 -28 000 kg
<b>BLADE CAPACITY:</b>	6.03 - 7.8 m <sup>3</sup>



# SPECIFICATIONS

MODEL		STD		LGP	
<b>ENGINE</b>					
Make and model		Cummins L9		Cummins L9	
Emissions Standard		CN Tier 3		CN Tier 3	
Displacement		8.9 l		8.9 l	
Number of Cylinders		6		6	
Gross Horsepower		203 kW (272 HP)		203 kW (272 HP)	
Net Horesepower		183 kW (245 HP)		183 kW (245 HP)	
Rated rpm		2 000		2 000	
Max. Torque		1 245 Nm@1400		1 245 Nm@1400	
Aspiration		Turbocharged & CAC		Turbocharged & CAC	
<b>POWERTRAIN</b>					
Torque Converter		Single stage / phase 409 mm		Single stage / phase 409 mm	
Transmission Type		Countershaft, power shift		Countershaft, power shift	
Numbers of Gear		3F and 3R with 2-speed (Hight and Low Range)		3F and 3R with 2-speed (High and Low Range)	
<b>TRAVEL SPEEDS</b>					
Gear	Range	Forward	Reverse	Forward	Revers
1 st	Low	3.4 km/h	4.2 km/h	3.4 km/h	4.2 km/h
	High	4.3 km/h	5.2 km/h	4.3 km/h	5.2 km/h
2 nd	Low	5.7 km/h	6.8 km/h	5.7 km/h	6.8 km/h
	High	7.3 km/h	8.9 km/h	7.3 km/h	8.9 km/h
3 rd	Low	10.0 km/h	11.0 km/h	10.0 km/h	11.0 km/h
	High	11.8 km/h	14.3 km/h	11.8 km/h	14.3 km/h
<b>DRAWBAR PULL AT STALL</b>					
Maximum		330/420 kN		330/420 kN	
Steering		2-speed steering		2-speed steering	
		Clutch-brake type		Clutch-brake type	
Control		Joystick		Joystick	

<b>BRAKES</b>		
Service	Multi-disc wet	Multi-disc wet
<b>FINAL DRIVE</b>		
	Double Reduction	Double Reduction
<b>UNDERCARRIAGE</b>		
Suspension	Oscilation - type	
Type	STD	LGP
Track Shoes	560 / 610 / 660 mm	864 mm
Track Shoes	22 / 24 / 26 inch	34 inch
Number of Track Shoes (per side)	41	45
Track on Ground	3050 mm	3480 mm
Track Rollers (per side)	7	9
Ground Clearance	410 mm	410 mm
Track Gauge	2 000 mm	2 250 mm
Track Pitch	216 mm	216 mm
Ground Pressure	62.4	37
<b>FLUID REFILL CAPACITIES</b>		
Fuel Tank	620 l	620 l
Engine Oil	24 l	24 l
Cooling System	40 l	40 l
Hydraulic Tank	158 l	158 l
Transmission System	173 l	173 l
Final Drive, Each Side	38 l	38 l

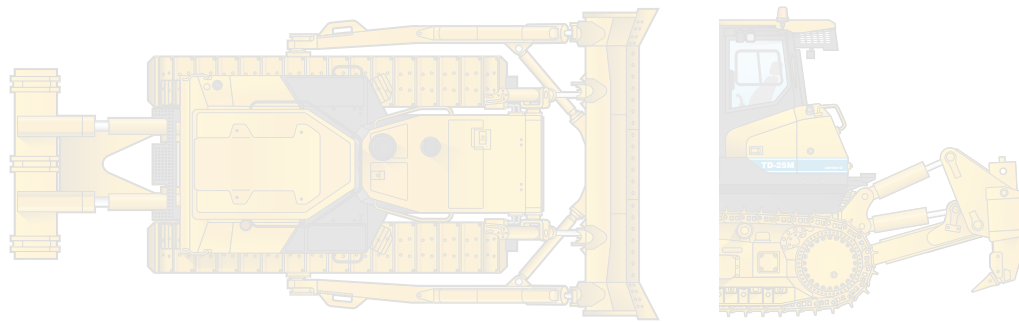


**TD-20M Semi-U Blade and Ripper**

<b>TYPE</b>	<b>STD</b>	<b>LGP</b>
<b>OVERALL DIMENSIONS</b>		
Height - Cab	3 416 mm	3 416 mm
Lenght, base machine	4 435 mm	4 730 mm
Lenght, w/blade STD	5 760 mm	6 070 mm
Lenght, w/blade and ripper (single/multi)	7 525 mm	7 480 mm
Width over tracks	2 560 mm	3 114 mm
Width over trunnions	2 543 mm	2 800 mm

<b>TYPE</b>	<b>STD</b>		
<b>BLADE SELECTION</b>			
	<b>Semi-U</b>	<b>Full-U (march 2024)</b>	<b>Straight</b>
Width x Height	3 725 x 1 562 mm		3 729 x 1 460 mm
Blade Capacity (SAE)	7.04 m <sup>3</sup>		7.8 m <sup>3</sup>
Blade lift height			1 170 mm
Blade digging depth	520 mm		520 mm
Maximum tilt			895 / 901 mm
Maximum pitch adjustment			
Weight	3 187 mm		

<b>TYPE</b>	<b>LGP</b>		
<b>BLADE SELECTION</b>			
	<b>Semi-U</b>	<b>Full-U (march 2024)</b>	<b>Straight</b>
Width x Height			4 370 x 1 360 mm
Blade Capacity (SAE)			6.03 m <sup>3</sup>
Blade lift height			1 210 mm
Blade digging depth			522 mm
Maximum tilt			660 mm
Maximum pitch adjustment			
Weight			



**TD-20M with Semi-U Blade and Ripper**

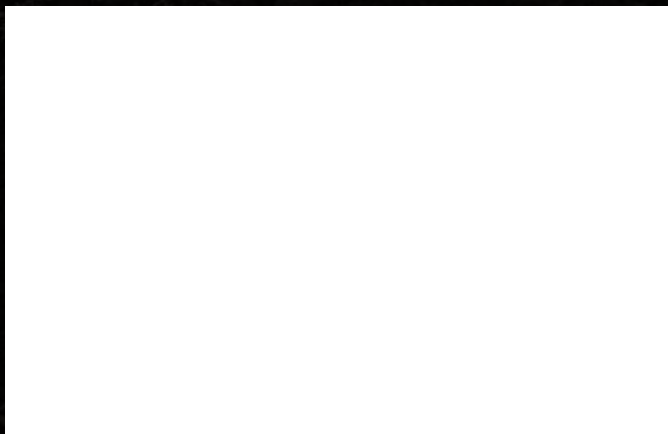
TYPE	TD-20M	
<b>RIPPER</b>		
Type	Parallelogram ripper	
	<b>Multi-shank (3-shank)</b>	
Maximum Penetration	555 mm	
Penetration Force	93.58 kN	
Pryout Force	168.2 kN	
Ripping Width	2 004 mm	
Weight	2 400 mm	

TYPE	STD	LGP
<b>OPERATING WEIGHT</b>		
Includes <b>Straight blade</b> , lubricants, coolant, full fuel tank, <b>standard track, ROPS/FOPS cab</b> , drawbar and operator		25 800 kg
Includes <b>Semi-U blade</b> , lubricants, coolant, full fuel tank, <b>standard track, ROPS/FOPS cab</b> , drawbar and operator	24 600 kg	
Includes <b>blade</b> , lubricants, coolant, full fuel tank, <b>standard track, ROPS/FOPS cab</b> , drawbar and operator + <b>3 Shank Ripper</b>	26 800 kg	28 000 kg



**LiuGong Dressta Machinery Sp. z o.o.  
Centralnego Okręgu Przemysłowego 15, 37-450 Stalowa Wola, POLAND**

**info@dressta.com  
www.dressta.com**



**Like and Follow us:**



**DR-PB-TD20M-T3-6-22022024-ENG**

The Dressta series of logos herein, including but not limited to word marks, device marks, letter of alphabet marks and combination marks, as the registered trademarks of LiuGong Dressta Machinery Sp. z o.o. are used by LiuGong Dressta Machinery Sp. z o.o. with legal permission, and shall not be used without permission. Specifications and designs are subject to change without notice. Illustrations and pictures may include optional equipment and may not include all standard equipment.

Equipment and options varies by regional availability.