

 **DRESSTA**

TD-20M

CRAWLER DOZER STD / LGP

CN Tier 3

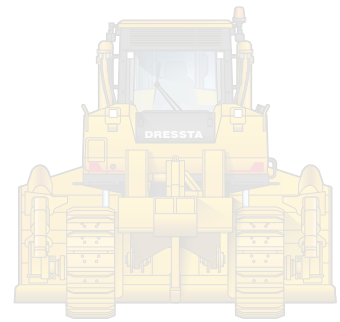
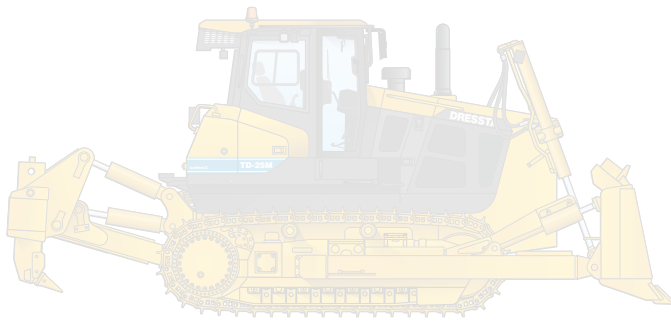
ENGINE:	Cummins L9
POWER:	203 kW (272 HP)
OPERATING WEIGHT:	24 300 -27 300 kg
BLADE CAPACITY:	6.0 - 7.8 m ³



SPECIFICATIONS

MODEL		STD		LGP	
ENGINE					
Make and model		Cummins L9		Cummins L9	
Emissions Standard		CN Tier 3		CN Tier 3	
Displacement		8.9 l		8.9 l	
Number of Cylinders		6		6	
Gross Horsepower		203 kW (272 HP)		203 kW (272 HP)	
Net Horesepower		185 kW (247 HP)		185 kW (247 HP)	
Rated rpm		2 000		2 000	
Max. Torque		1 245 Nm@1400		1 245 Nm@1400	
Aspiration		Turbocharged & CAC		Turbocharged & CAC	
POWERTRAIN					
Torque Converter		Single stage / phase 409 mm		Single stage / phase 409 mm	
Transmission Type		Countershaft, power shift		Countershaft, power shift	
Numbers of Gear		3F and 3R with 2-speed (Hight and Low Range)		3F and 3R with 2-speed (High and Low Range)	
TRAVEL SPEEDS					
Gear	Range	Forward	Reverse	Forward	Revers
1 st	Low	3.4 km/h	4.2 km/h	3.4 km/h	4.2 km/h
	High	4.3 km/h	5.2 km/h	4.3 km/h	5.2 km/h
2 nd	Low	5.7 km/h	6.8 km/h	5.7 km/h	6.8 km/h
	High	7.3 km/h	8.9 km/h	7.3 km/h	8.9 km/h
3 rd	Low	10.0 km/h	11.0 km/h	10.0 km/h	11.0 km/h
	High	11.8 km/h	14.3 km/h	11.8 km/h	14.3 km/h
DRAWBAR PULL AT STALL					
Maximum		330/420 kN		330/420 kN	
Steering		2-speed steering		2-speed steering	
		Clutch-brake type		Clutch-brake type	
Control		Joystick		Joystick	

BRAKES		
Service	Multi-disc wet	Multi-disc wet
FINAL DRIVE		
	Double Reduction	Double Reduction
UNDERCARRIAGE		
Suspension	Oscilation - type	
Type	STD	LGP
Track Shoes	560 / 610 / 660 mm	864 mm
Track Shoes	22 / 24 / 26 inch	34 inch
Number of Track Shoes (per side)	41	45
Track on Ground	3050 mm	3480 mm
Track Rollers (per side)	7	8
Ground Clearance	410 mm	410 mm
Track Gauge	2 000 mm	2 250 mm
Track Pitch	216 mm	216 mm
Ground Pressure	62.4	37
FLUID REFILL CAPACITIES		
Fuel Tank	620 l	620 l
Engine Oil	24 l	24 l
Cooling System	32 l	32 l
Hydraulic Tank	158 l	158 l
Transmission System	173 l	173 l
Final Drive, Each Side	38 l	38 l

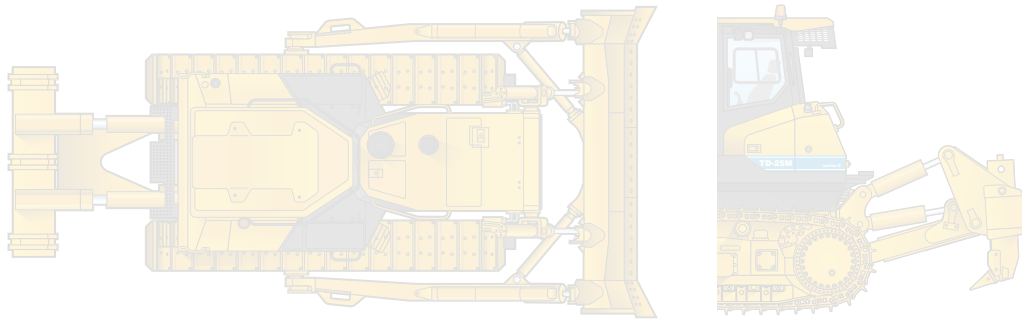


TD-20M Semi-U Blade and Ripper

TYPE	STD	LGP
OVERALL DIMENSIONS		
Height - Cab	3 416 mm	3 416 mm
Lenght, base machine	4 435 mm	4 710 mm
Lenght, w/blade STD	5 760 mm	6 050 mm
Lenght, w/blade and ripper (single/multi)	7 525 mm	7 480 mm
Width over tracks	2 540 mm	3 114 mm
Width over trunnions	2 550 mm	2 800 mm

TYPE	STD		
BLADE SELECTION			
	Semi-U	Full-U (march 2024)	Straight
Width x Height	3 644 x 1 589 mm		3 725 x 1 460 mm
Blade Capacity (SAE)	7.04 m ³		7.8 m ³
Blade lift height			1 210 mm
Blade digging depth	540 mm		540 mm
Maximum tilt			735 mm
Maximum pitch adjustment			
Weight	3 186 mm		

TYPE	LGP		
BLADE SELECTION			
	Semi-U	Full-U (march 2024)	Straight
Width x Height			4 365 x 1 232 mm
Blade Capacity (SAE)			6.0 m ³
Blade lift height			1 210 mm
Blade digging depth			540 mm
Maximum tilt			735 mm
Maximum pitch adjustment			
Weight			



TD-20M with Semi-U Blade and Ripper

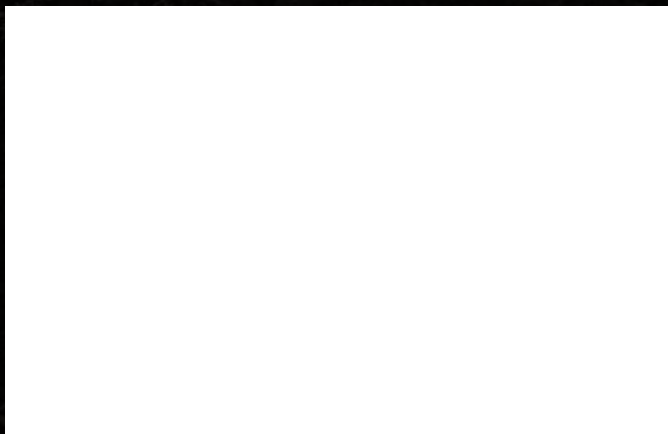
TYPE	TD-20M	
RIPPER		
Type	Parallelogram ripper	
	Multi-shank (3-shank)	
Maximum Penetration	555 mm	
Penetration Force	93.58 kN	
Pryout Force	168.2 kN	
Ripping Width	2 004 mm	
Weight	2 617 mm	

TYPE	STD	LGP
OPERATING WEIGHT		
Includes Straight blade, lubricants, coolant, full fuel tank, standard track, ROPS/FOPS cab, drawbar and operator(STD):		26 300 kg
Includes Semi-U blade , lubricants, coolant, full fuel tank, standard track, ROPS/FOPS cab , drawbar and operator	24 700 kg	
Includes blade , lubricants, coolant, full fuel tank, standard track, ROPS/FOPS cab , drawbar and operator + 3 Shank Ripper	27 300 kg	



**LiuGong Dressta Machinery Sp. z o.o.
Centralnego Okręgu Przemysłowego 15, 37-450 Stalowa Wola, POLAND**

**info@dressta.com
www.dressta.com**



Like and Follow us:



DR-PB-TD20M-T3-6-24012025-ENG

The Dressta series of logos herein, including but not limited to word marks, device marks, letter of alphabet marks and combination marks, as the registered trademarks of LiuGong Dressta Machinery Sp. z o.o. are used by LiuGong Dressta Machinery Sp. z o.o. with legal permission, and shall not be used without permission. Specifications and designs are subject to change without notice. Illustrations and pictures may include optional equipment and may not include all standard equipment.

Equipment and options varies by regional availability.